

# Knowledge Discovery Solutions for Defence Intelligence Organisations

*Col Pradeep Bhat (Retd)  
Associate Director, Govt Industry Solutions  
IBM India Pvt Ltd*

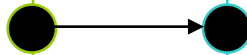


# Intelligence agencies are moving along a spectrum of improvement

## Traditional Approach – Siloed Apps

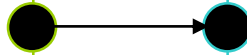
## Emerging Approach – Enterprise Apps

Many disconnected and conflicting data sources



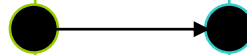
Integrated data including sensors, video and voice

Each department operates as an independent “silo”

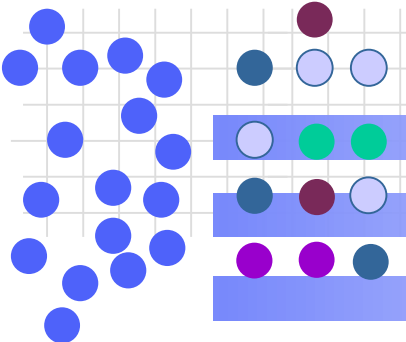


Coordinated actions across departments and stakeholders

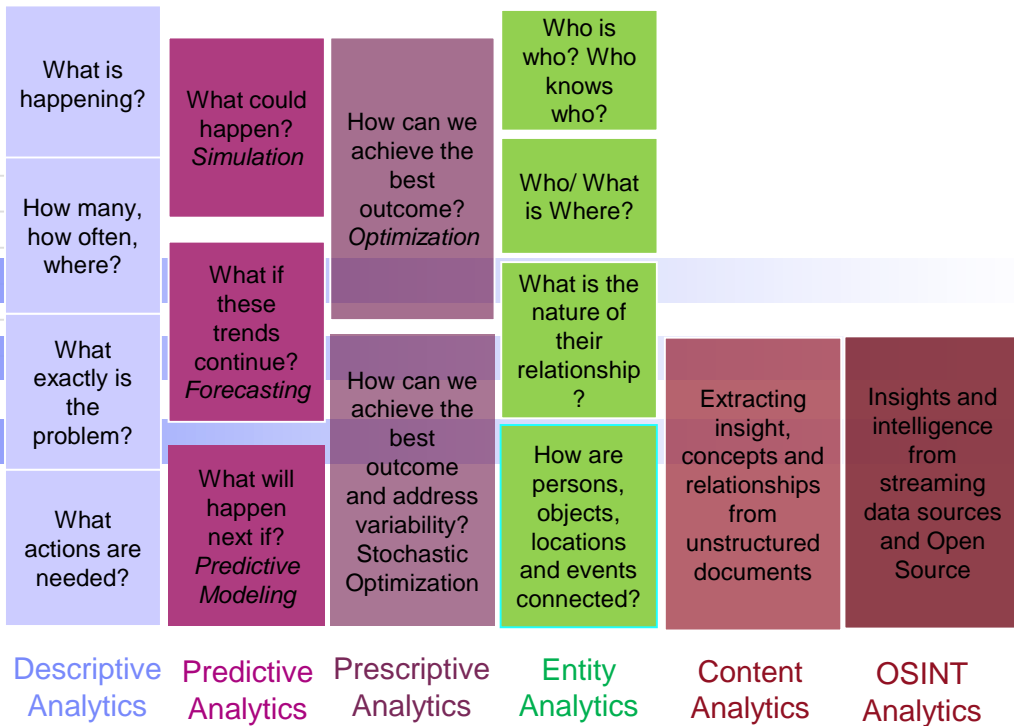
Long range predictions for trends and directions



More detailed and actionable near-term predictions



Structured data and unstructured content - made consumable and accessible appropriately

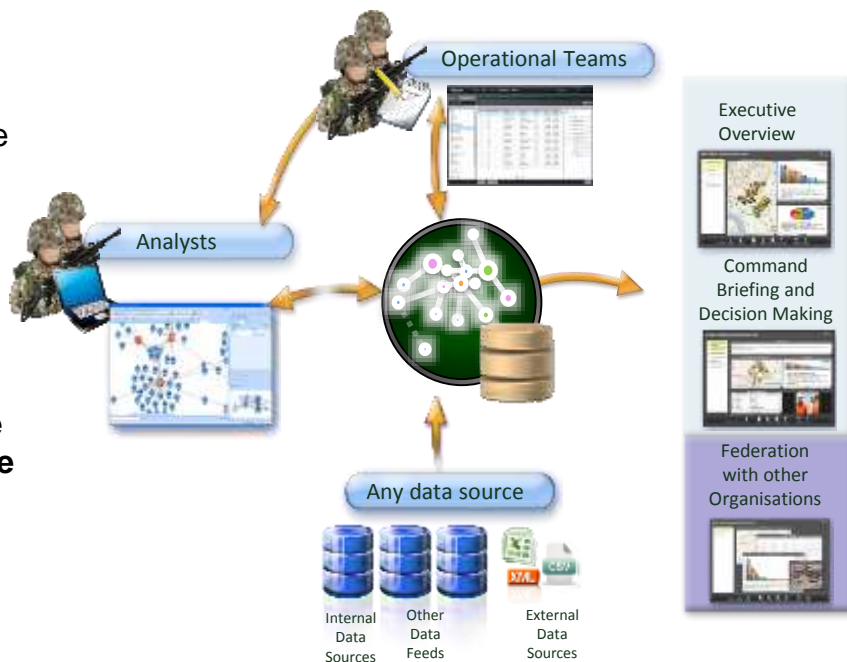


# IBM i2 Enterprise Insight Analysis for Defence Intelligence



Supports the entire Intelligence Lifecycle, from Data Ingestion to Search, Analysis & Reporting

- ❑ **Improve current intelligence picture** by processing all available data, from structured and unstructured sources
- ❑ **Exploit shared intelligence** and support collaborative working
- ❑ **Reduce operational intelligence gaps for rotating units to ensure mission continuity** through a common repository



# IBM i2 EIA Platform - Key Capabilities



*Create, Update  
Delete*

*Collaborate*

*Collate, Integrate  
Summarise*

## PRODUCE AND SHARE



## INGEST AND MANAGE



*Manage  
Govern*

## VISUALIZE AND ANALYZE

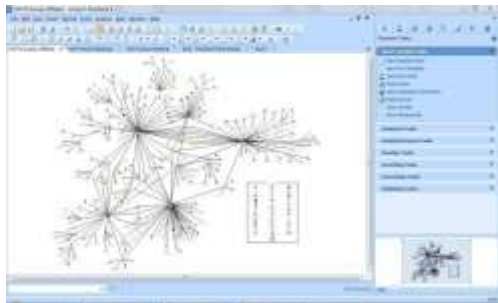


## SEARCH AND EXPLORE



*Visualise Analyse*

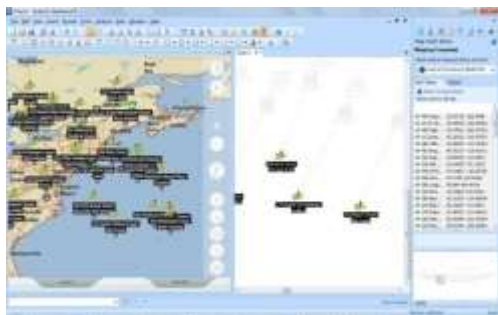
*Search & Query*



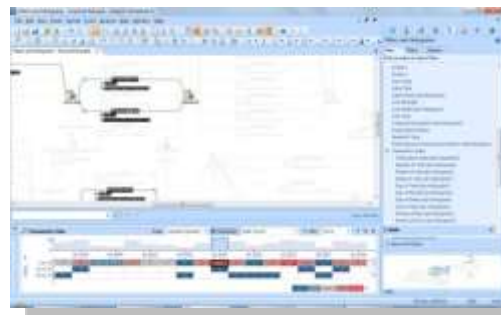
Link & Social Network Analysis



Transaction timelines



Geo-location

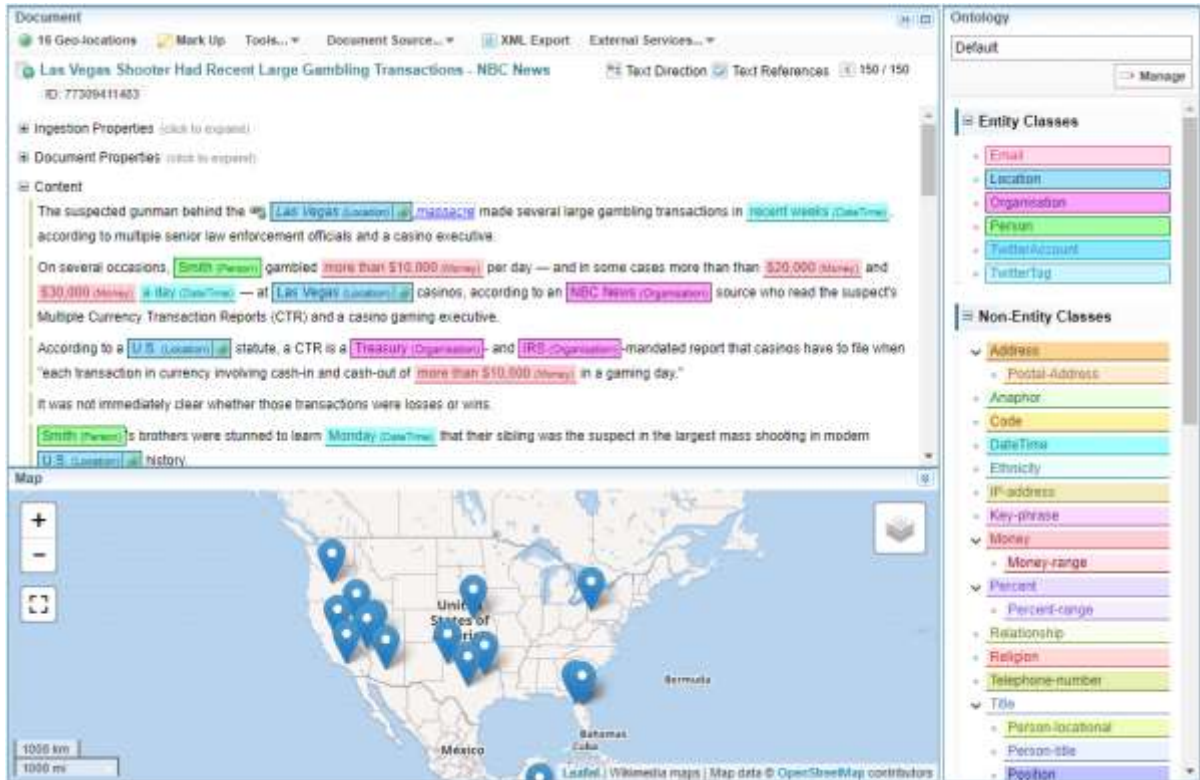


Statistical / Filtering, Histograms & Heat maps

# Sintelix ANB Plugin for IBM i2 Analyst Notebook

Sintelix adds the ability to ingest and analyze unstructured data from a range of sources

Sintelix extracts entities, relationships and properties from any text. The built-in configuration identifies people, organisations, geo-tagged locations and 24 other data types



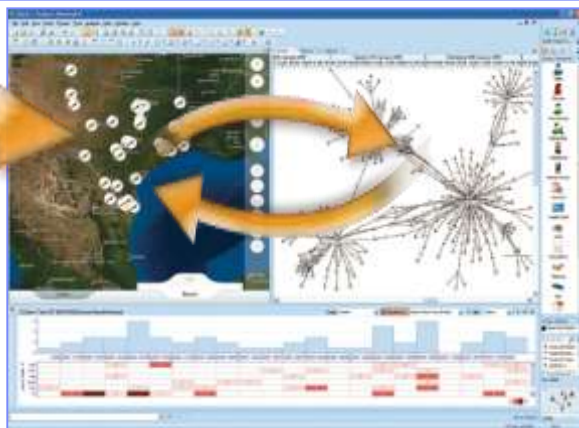
The screenshot displays the Sintelix ANB Plugin interface. The main window shows a document titled "Las Vegas Shooter Had Recent Large Gambling Transactions - NBC News" with ID 77209411403. The document content is analyzed, with entities highlighted in colored boxes: "Las Vegas Shooter" (Location), "made several large gambling transactions" (Transaction), "recent weeks" (Time), "Smith" (Person), "more than \$10,000" (Money), "\$20,000" (Money), "\$30,000" (Money), "at Las Vegas" (Location), "casinos" (Location), "NBC News" (Organization), "U.S." (Location), "statute" (Text), "a CTR is a" (Text), "Treasury" (Organization), "and IRS" (Organization), "mandated report" (Text), "more than \$10,000" (Money), "Monday" (Time), "U.S. Shooter" (Location), and "history" (Text). A map below the document shows the United States with several blue location pins. The right sidebar displays the "Ontology" section, listing "Entity Classes" (Email, Location, Organisation, Person, TwitterAccount, TwitterTag) and "Non-Entity Classes" (Address, Postal-Address, Anaphor, Code, DateTime, Ethnicity, IP-address, Key-phrase, Money, Money-range, Percent, Percent-range, Relationship, Religion, Telephone-number, Title, Person-locational, Person-title, Position).

## Combining Esri ArcGIS geospatial tools with the intelligence analysis tools of IBM i2 Analyst's Notebook

- IBM i2 Analyst's Notebook Connector for Esri is a plug-in to IBM i2 Analyst's Notebook
- It integrates available supported Esri ArcGIS Server services and capabilities directly in to the IBM i2 Analyst's Notebook environment
- It provides a two-way integration that allows i2 Analyst's Notebook chart data to be mapped as well as Esri stored data to be combined with chart data for further analysis

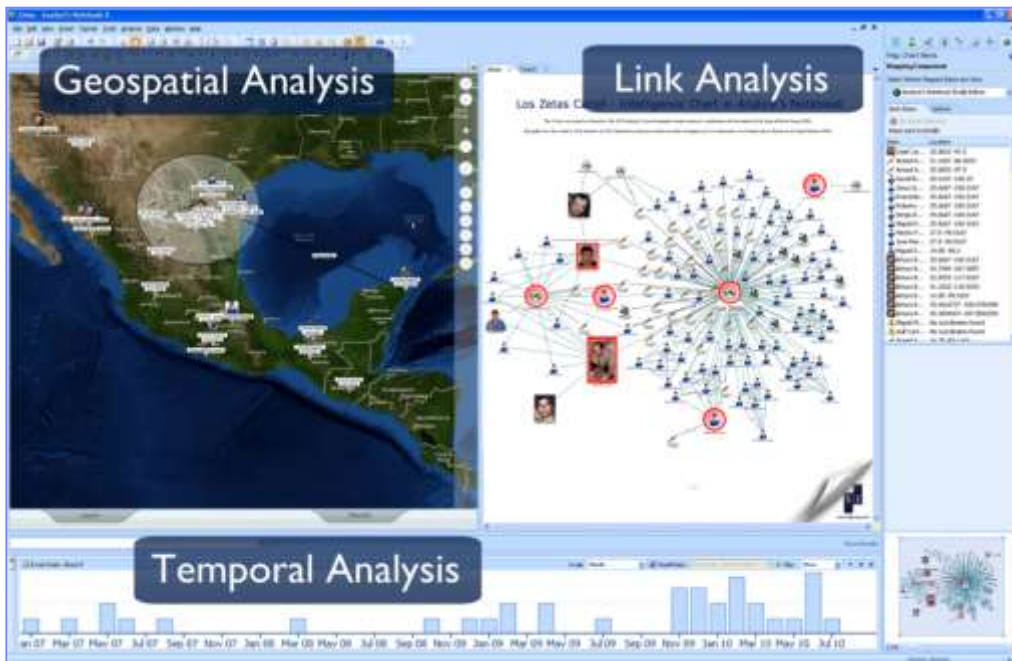


Esri ArcGIS Server





- IBM i2 Analyst's Notebook Connector for Esri integrates Esri's ArcGIS Server geospatial functionalities to the visualization capabilities of IBM i2 Analyst's Notebook.
- Enables users to perform association, temporal and geospatial analysis in a single work environment and build a detailed and robust analysis picture more quickly.



**WHO/WHAT**



**WHERE**



**WHEN**

**Reduce dependencies on specialist geographic information system (GIS) analysis teams for faster response times**

- Enable intelligence analysts with authorized access to perform fundamental geospatial analysis without having to depend on specialist GIS analysis teams.
- Share workload and help specialist GIS analysis teams concentrate on in-depth geospatial analysis tasks



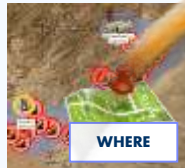
**Specialist GIS Analysis Teams**



**Intelligence Analysis Teams**



**Specialized GIS Analysis**



**Intel. Analysis Related GIS**



**Link Analysis**



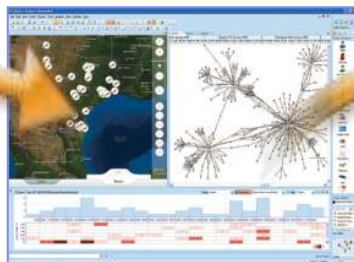
**Temporal Analysis**

**Optimize investments made in intelligence and geospatial analysis capabilities with rich GIS capabilities**

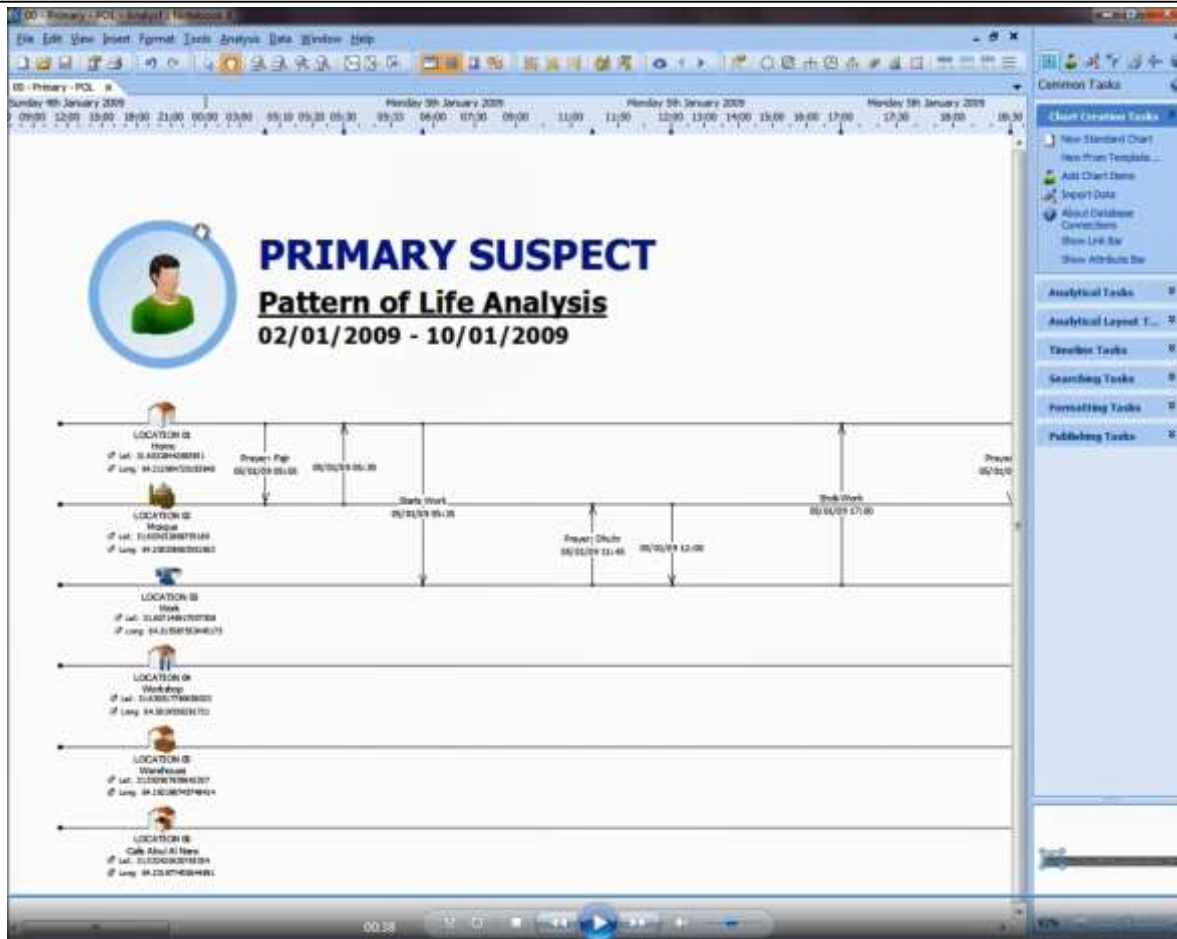
- Integrate geospatial analysis results and visualizations for more detailed intelligence products.
- Add a crucial layer of actionable information to intelligence products with geospatial intelligence.
- Add the ability to copy or save map views and insert visualizations into i2 charts, briefings and reports.
- Share geospatial analysis findings among users by saving work to mapping schemes and associating and distributing this information alongside IBM i2 charts



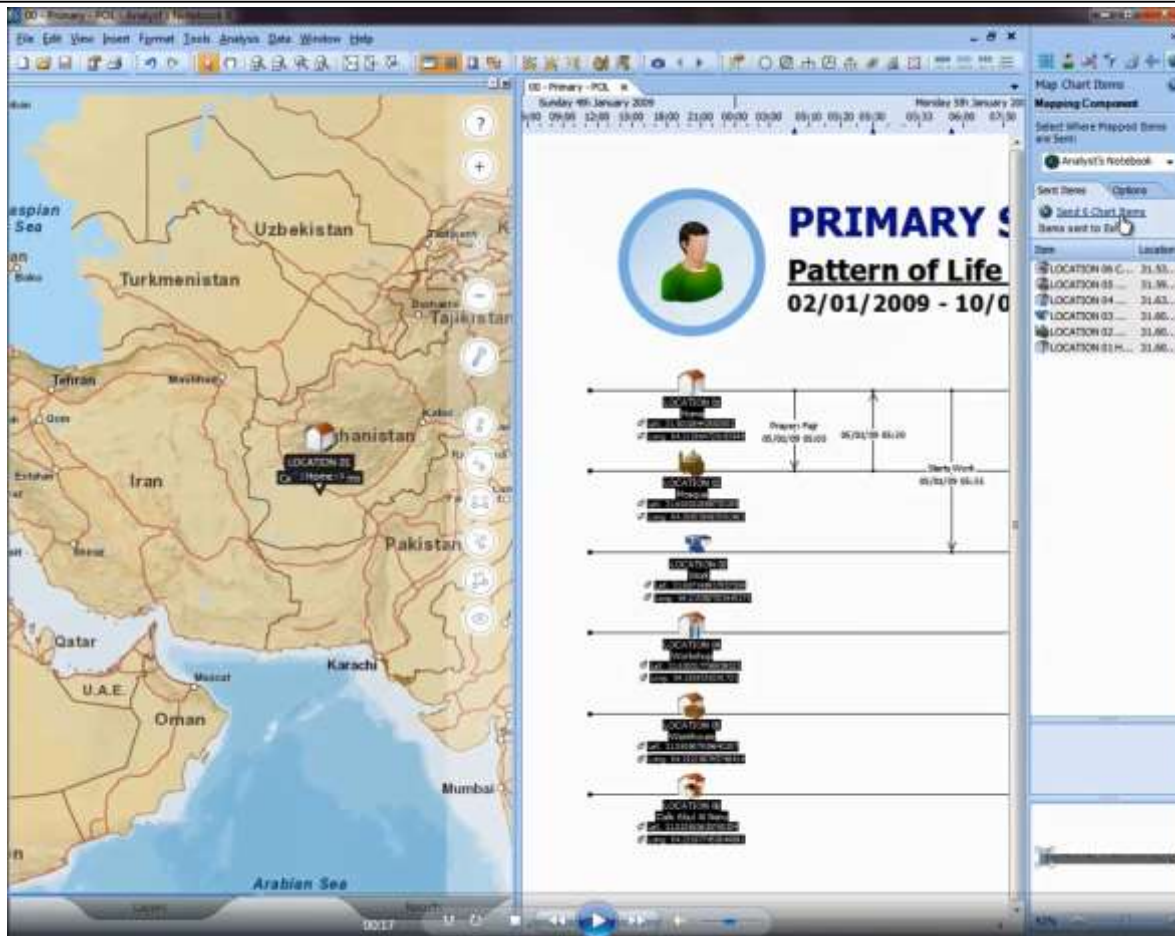
**Esri ArcGIS Resources**



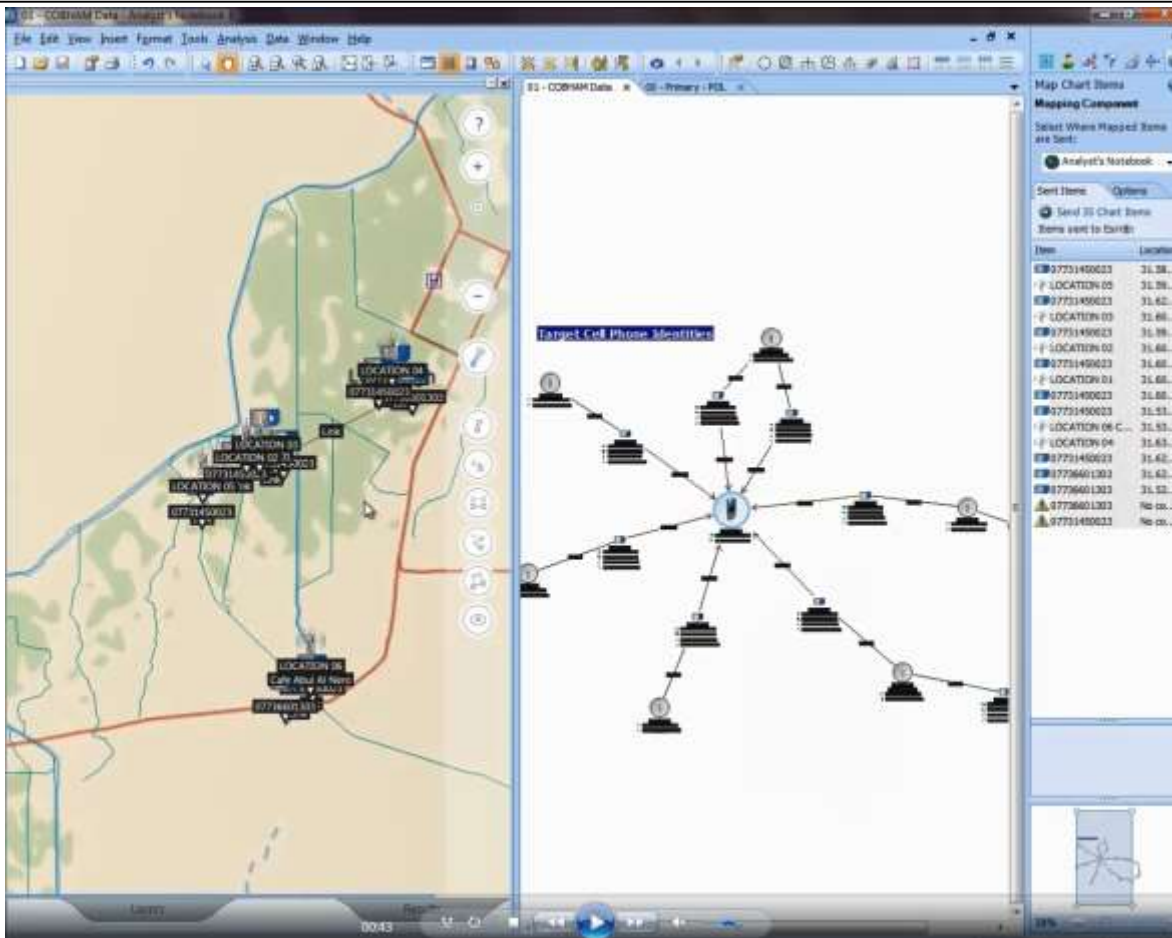
# IBM i2 ANB – Pattern of Life Analysis



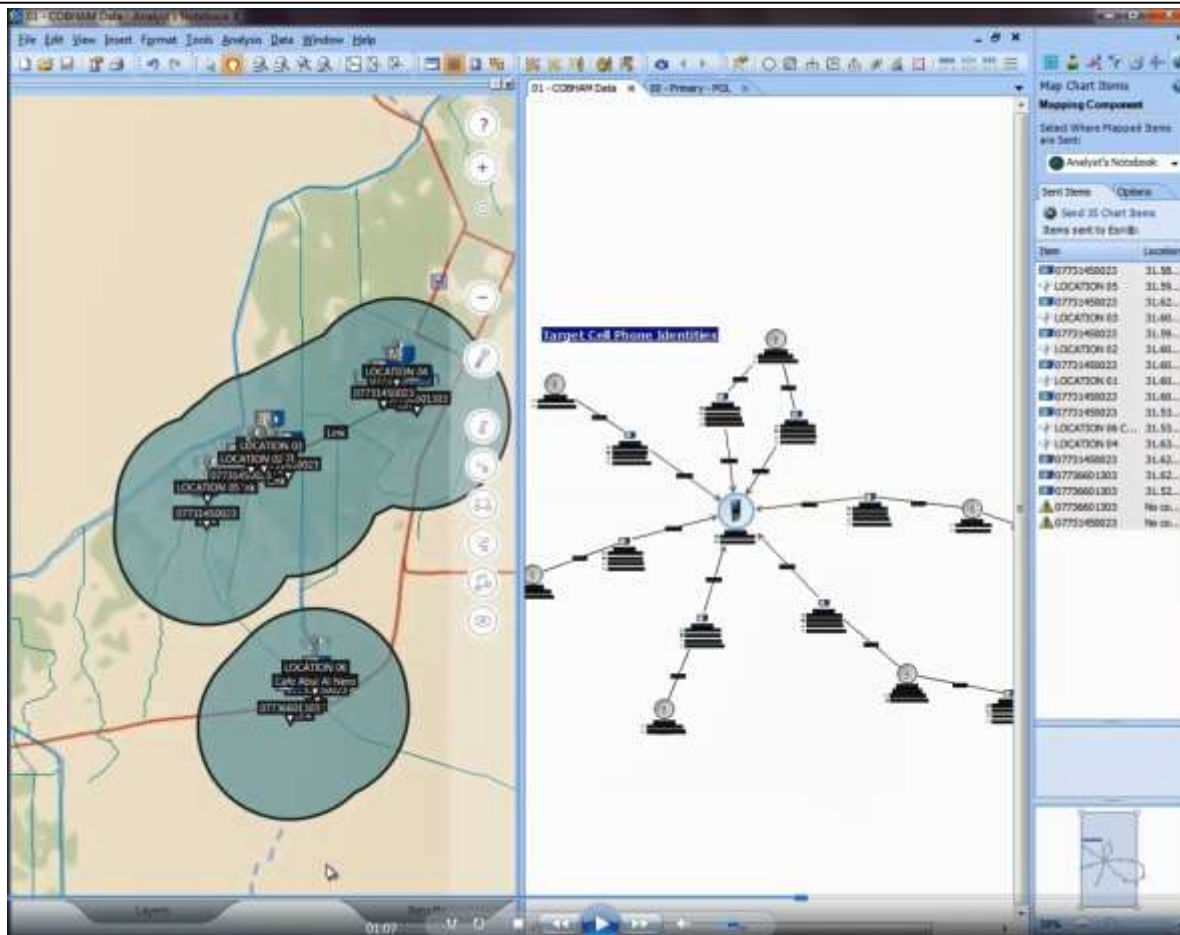
# IBM i2 ANB – Pattern of Life Analysis



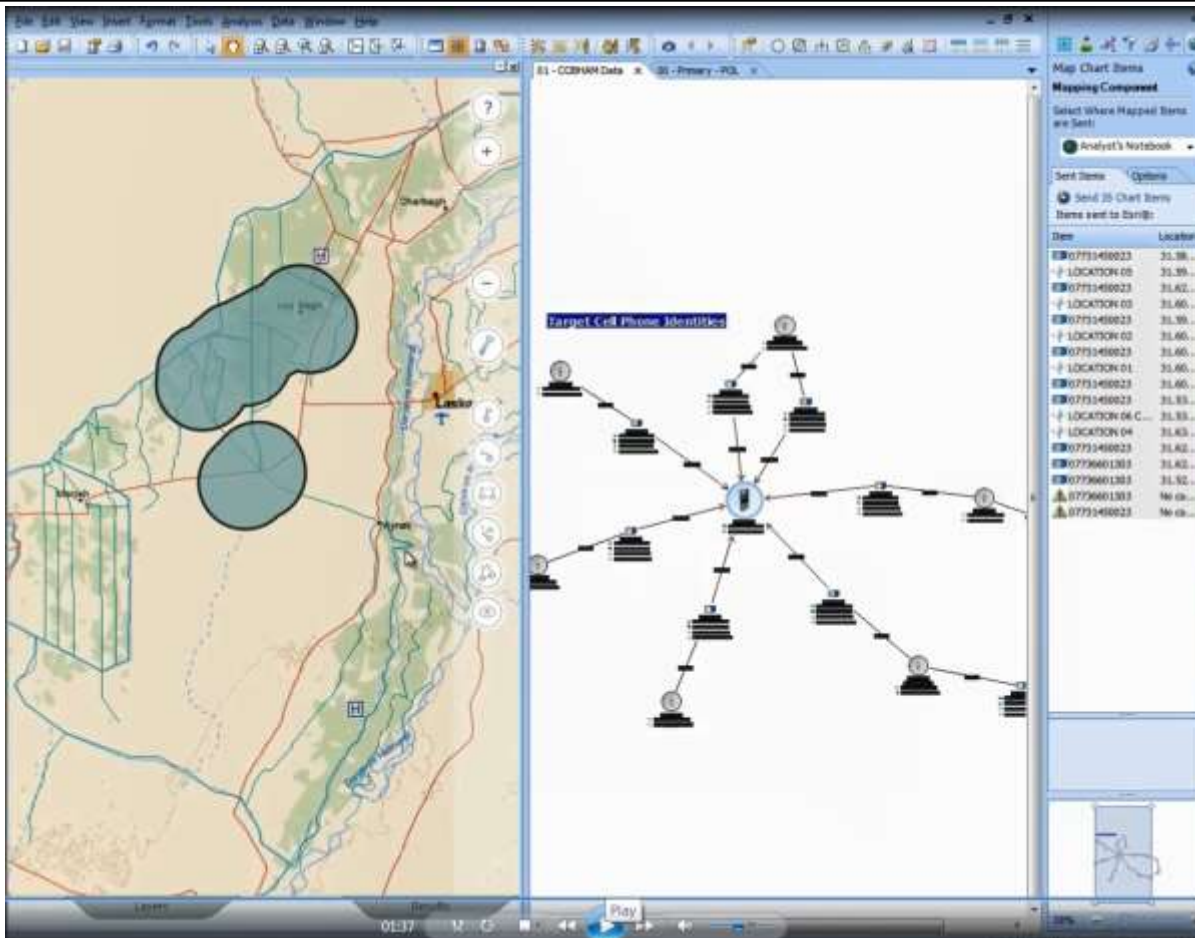
# IBM i2 ANB – Pattern of Life Analysis



# IBM i2 ANB – Pattern of Life Analysis



# IBM i2 ANB – Pattern of Life Analysis





# IBM i2 ANB – Pattern of Life Analysis



The screenshot displays the IBM i2 ANB software interface. The main window shows a map with several brown circular markers. One marker is highlighted with a tooltip containing the following information:

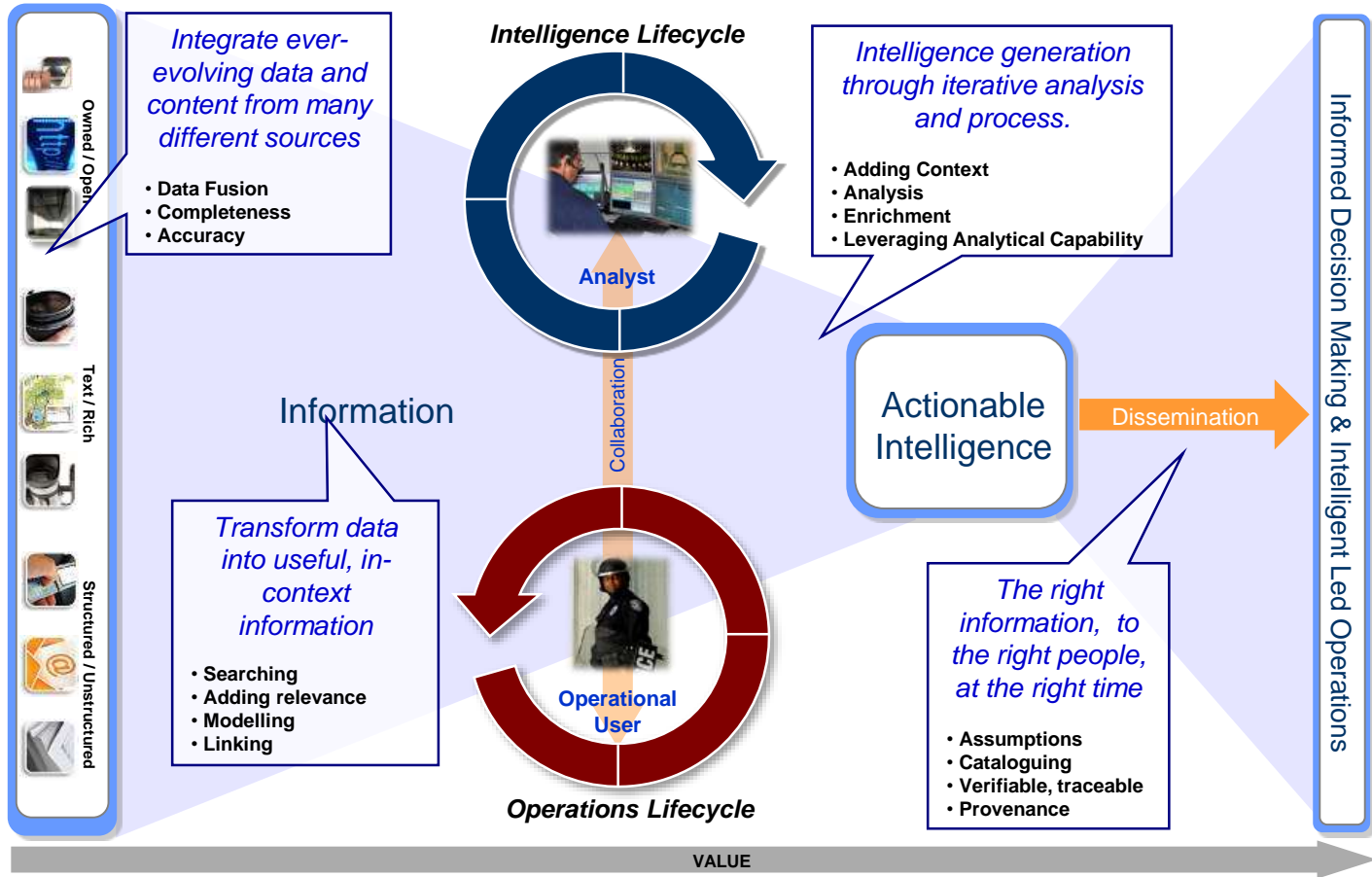
- GEONFORM: 142708
- EVENTID: 1119027
- LOCATIONID: Occurred in
- GEOLOCATIONID: Incident/Event
- DATE: 16/10/2008 00:00:00
- REGION: South Asia
- COUNTRY: Afghanistan
- CITY: Yakubul
- STATE: Helmand
- LATITUDE: 31.79
- LONGITUDE: 64.63

Below the map, a data table is visible, showing columns for various attributes and rows of data. The table has a header row and several data rows, with some cells containing vertical bars or other graphical elements.

On the right side of the interface, there is a 'Map Chart Items' panel with the following sections:

- Mapping Component**: Select Where Mapped Items are Sent: Analyst's Notebook
- Send Items**: Options
  - When About (Event) Coordinates
  - Send Links
  - Invert Link Colors
  - Cluster Entities
- Chart Items**: Look for Locations in:
  - Labels, Descriptions and Cards
  - Specify Details...
  - Attributes
  - Specify Details...
  - Data Records

# Creating Actionable Intelligence

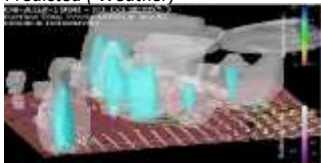


# Intelligent Operations Centre for Ops Rooms



## The Situation

*Predicted ( Weather)*



*Instantaneous ( explosion)*

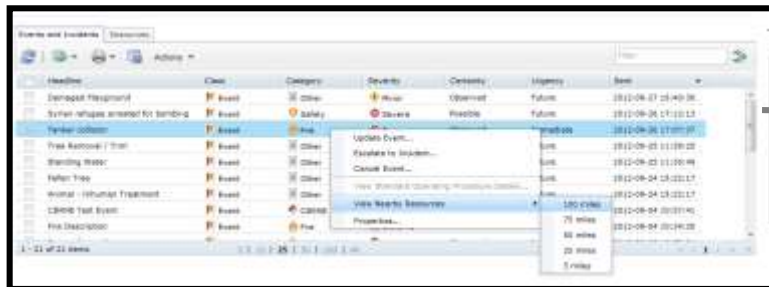


1. Information is captured and displayed by graphical and textual means to give an operational picture via the IOC



2. Integrated rules, KPIs and analytic engines can correlate events to ensure the most appropriate priorities are been managed

3. As events are captured by the IOC, automatic responses can be triggered



4. SOPs manage the situation via well trained and defined actions



Thank You